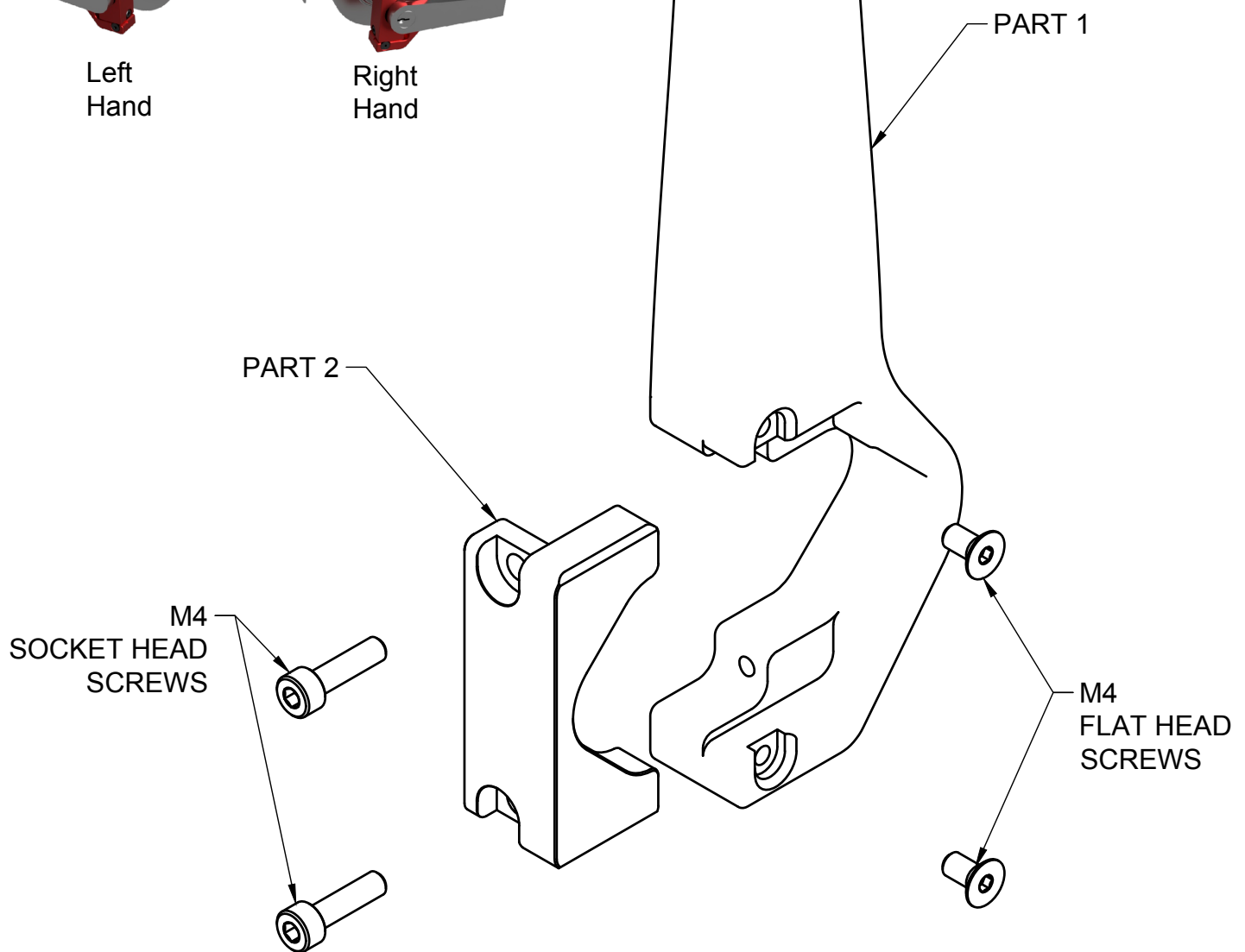


Left  
Hand



Right  
Hand



### GLOVE-ONLY HANDLE INSTALLATION (RH SHOWN, LH OPPOSITE)

- 1) CAPTURE DOOR HANDLE BETWEEN PART 1 AND PART 2
- 2) INSTALL M4 SOCKET HEAD SCREWS\* AND TIGHTEN SNUG WITH INCLUDED HEX KEY (ALTERNATE BETWEEN SCREWS TO KEEP PART 2 ALIGNED TO PART 1).
- 3) INSTALL M4 FLAT HEAD SCREWS AND TIGHTEN SNUG WITH INCLUDED HEX KEY

\*TWO LENGTHS ARE INCLUDED TO ACCOMODATE A RANGE OF DOOR HANDLE SIZES